

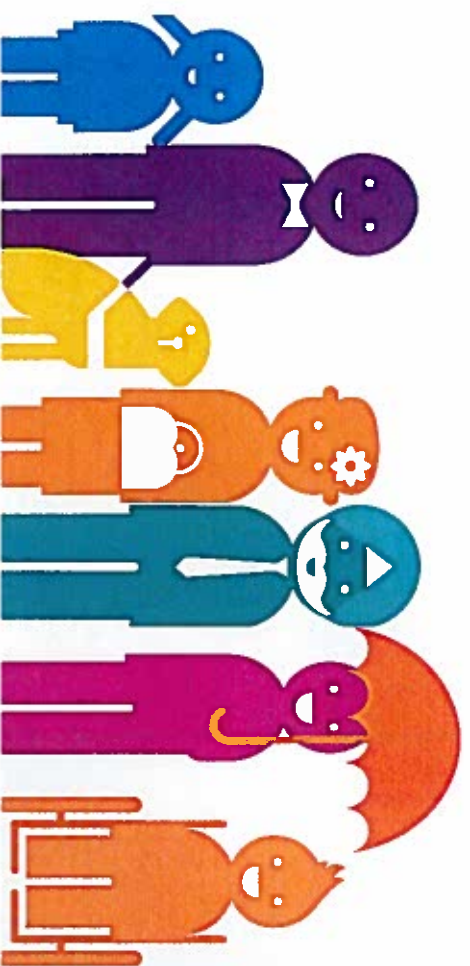
North Somerset

CAB

Do you need advice on debt, benefits, employment, housing

Every Tuesday from 14th April
1pm—3pm

@
Yatton Moor Children's Centre
Yatton Infant School
High Street
Yatton
BS49 4HJ



North Somerset Citizens Advice Bureau



Location	Days	Times
Badger Centre 3-6 Wadham Street Weston super Mare BS23 1JY	Monday, Tuesday, Wednesday & Fridays – Tuesday evening	Drop In- 9:45am —1:00pm Building open at 9am 4:30pm – 7:00pm
25 Old Street Clevedon BS21 6ND	Polish Clinic - Monday (interpreter available) Tuesday Wednesday	10am – 12noon 10am – 3pm 10am – 3pm
Folk Hall, High Street, Portishead BS20 6PR	Monday	10am – 2pm
Methodist Church Community Centre, Silver Street, Nailsea BS48 2DS	Friday	10am – 2pm
Resource Centre 4 Baltic Place Pill BS20 0EJ	Thursday—book an appointment at the Centre 01275 375670	10am – 1pm
Yatton Moor Children's Centre, Infant School BS49 4HJ	Tuesday	1:00pm – 3pm
AdviceLine	03444 111 444 Monday - Friday	10am – 2pm
Email Advice	advice@nscab.org.uk	Response in 5 working days
North Somerset CAB Website	www.nscab.org.uk Visit 'Advice in BSL' on our home page and watch our BSL videos	
Advice North Somerset Website	www.advicenorthsomerset .org.uk	
Citizens Advice	www.adviceguide.org.uk	